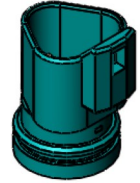
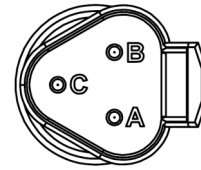


# DEUTSCH DT04-3P

Electrical connection option "E"



## STANDARD MODELS

Output	Pin A	Pin B	Pin C
Voltage (3-wire)	+V	Ground	Signal
4-20mA (2-wire)	+V	-V	N/A

+V	Supply Voltage
-V	4-20mA Signal/Electrical Ground
Ground	Voltage Electrical Ground
Signal	Voltage Output Signal
Case	Case / Earth Ground
N/A	Not Applicable

## CSA APPROVED MODELS

Intrinsically Safe Only

Output	Pin A	Pin B	Pin C
4-20mA (2-wire)	+V	-V	Case

### WARNING! NOTICE FOR INTRINSICALLY SAFE SENSORS:

Refer to the Intrinsically Safe Operating Instructions and/or product datasheet for barrier installation information.



Thoroughly read and understand these wiring instructions prior to installation. **Please call Core Sensors at (862) 245-2673** if you are unsure about any of the instructions.

