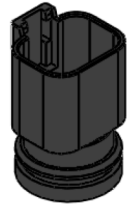
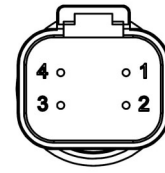


DEUTSCH DT04-4P

Electrical connection option “B”



STANDARD MODELS

Output	Pin 1	Pin 2	Pin 3	Pin 4
mV (4-wire)	+V	Ground	+Signal	-Signal
Voltage (3-wire)	+V	Ground	Signal	N/A
4-20mA (2-wire)	+V	-V	N/A	N/A

+V	Supply Voltage
-V	4-20mA Signal/Electrical Ground
Ground	Voltage Electrical Ground
Signal	Voltage Output Signal
Case	Case / Earth Ground
N/A	Not Applicable

CSA APPROVED MODELS

Intrinsically Safe Only

Output	Pin 1	Pin 2	Pin 3	Pin 4
Voltage (3-wire)	+V	Ground	Signal	Case
4-20mA (2-wire)	+V	-V	N/A	Case

WARNING! NOTICE FOR INTRINSICALLY SAFE SENSORS:

Refer to the Intrinsically Safe Operating Instructions and/or product datasheet for barrier installation information.



Thoroughly read and understand these wiring instructions prior to installation. **Please call Core Sensors at (862) 245-2673** if you are unsure about any of the instructions.

